

# The Parishioner

YARPOLE LUCTON CROFT BIRCHER BICTON

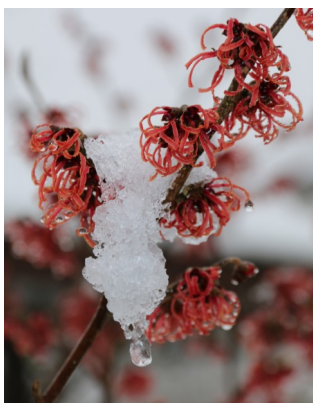
February 2025

**In this issue:**

**Chess in the Gallery returns on Mondays .....5**  
**Job vacancy at The Bell .....12**  
**New local music and dance groups .....12 & 13**  
**Information from Ofcom .....14**  
**Mappa Mundi article .....36**

**And all our regular features**





Thanks to the following for their photos:

Front page: Anna Morley - Men's Shed members celebrating the building of their new premises.

This page: 'Charge of the light Brigade', Bircher tractors off to the Leominster tractor parade in December - Keith Smith. Three sunrises and a sunset over Yarpole - Julie Archer, David Cheshire, Nic Treece and Gilly Lloyd. Moonset over Bircher & Witch Hazel (also in Bircher) - Keith Smith.

# FROM THE EDITOR'S CHAIR

Greetings to all our readers for the New Year (even though we are a month into 2025)! We wish everyone a peaceful and contented year.

Once again we have been really delighted with the quality of the photos that have been sent in this month. Do keep them coming in! If your photo has not appeared, it will be stored on our cloud for use in the future.

A recent 'just one thing' programme, shown after the excellent Michael Moseley's death, stated that on reaching the age of 70, we should learn two new skills to keep our minds and bodies fit and active. Anyone in any age group in our community should have no difficulty in achieving that goal! With the art and exercise classes at the Parish Hall, our walking group, as well as new dance, music and chess classes starting this year, there is much to choose from! There is information about all these activities in this edition of The Parishioner, so do think about joining up.

I would like to thank everyone who contributes to the newsletter by using the collection tin in the shop. We empty it frequently and it always contains far more than loose change! In the last six weeks, we have collected more than £82!

Next time I am in the Editor's chair it will be springtime which is a lovely thought.

Hetty

**STOP PRESS** I have also been asked to pass on the very sad news that Janet Chitham died on 19 January. Janet was a very important and well-loved member of our community, and we will be thinking about the best way to commemorate her life in a future edition of The Parishioner - Ed

To send in articles and news items, please e-mail us at:

[newsletter@yarpole.org](mailto:newsletter@yarpole.org)

Or leave in the box at the shop

The deadline for all submissions is

**THE 10th OF THE PREVIOUS MONTH**

*There is no newsletter in January or August*

## ADVERTISEMENTS

To place a commercial advert in The Parishioner, please email [newsletter@yarpole.org](mailto:newsletter@yarpole.org) and we'll send you more information

Prices start at £5 for a 1/8 page ad

We also print small ads for parishioners for which we suggest that a small donation is left in the yellow collection box in the shop.

## The Parishioner on USB stick

The Parishioner is also available on a USB stick for parish residents with sight problems. If you'd like to receive it in this format, or know someone who would, please let us know at [newsletter@yarpole.org](mailto:newsletter@yarpole.org).



Adverts are not read out in the audio version; here are contact details for some services:

**Electricians:** KC Electrical 07446 130883; Ian Mackay 07736 303297 or 07396 578662

**Builder:** Colin Vickress 07968 768011 / 01568 612699

**Plastering and damp proofing:** Daniel Newman 07701 097 897

**Handymen:** Simon 07846 259549; Andy 07855 813303

**Gardening:** Shaun Yapp 01568 780929 / 07876197770

**House cleaning:** Pristine Clean 07733194057

**Oven cleaning:** Oven Wizards 01885 400337 / 07817 477850

**Chimney sweep:** Phil Mundy 01568 780417 / 07837 935102

**Firewood:** Pete Merriman 01568 780414; Steve Mantle 07980 775838; Dave Ward 07866 441154

**AppleMac Mechanic:** Lee Jones 07875 267790

**Mobile hairdresser:** Dawn Goodwin 01568 770387

**Foot health:** Stacey Gardner 01568 368306 / 07540566871

**Osteopaths:** Leominster Osteopaths 01568 610610

**Homecare:** 07375 520646

**Solicitors:** Norris Miles 01584 810575

**Funeral services:** Victoria Allen 01584 879035; Oak Tree 01568 250030

**Catering:** Jackie Thomas 01584 77190 / 07526 12176

**Vets:** Mortimer Vets 01544 388262



WhatsApp

## Stay in touch: Yarpole WhatsApp Group

Share local information & news, relevant to our community, via the Yarpole Whatsapp group. We now have over 130 members! To join send a message with your mobile number to: Katie Daniels **07786 515922**



WhatsApp



## Calling Facebook Users

To get Yarpole news on Facebook, search for 'Yarpole Community'. See what's on! See what matters in Yarpole! Contribute to the page. Like us and become a friend.



## Yarpole Welcome Packs

If you are aware of new residents who have moved to the parish, don't forget to inform Sue Langley to be sure they receive a pack. Email [susanmarylangley@gmail.com](mailto:susanmarylangley@gmail.com).

## Don't miss out on what's happening!

To be added to the events mailing list, email [events@yarpole.org](mailto:events@yarpole.org).



## WHAT'S ON

## WHAT'S ON



### CHESS IN THE GALLERY



Monday afternoons, 2.00 - 5.00.

At The Gallery Café, St. Leonard's Church.

All welcome, including beginners. Refreshments provided.

We look forward to seeing you.

For more information: [bandjo@btopenworld.com](mailto:bandjo@btopenworld.com))

John Nurse

## Police Community Support Officer meetings

Our local (Leominster) PCSO Steph Harper aims to visit the Gallery Café every 5 weeks on a Wednesday at 11.00.

Her next visit, all being well, will be on **19 February**. Join her in the café for a coffee and a chat.

Pete Lloyd



### Come and **Be Still**



Some music, a reading, a prayer and time for your own quiet reflection.

Monthly, on the first Wednesday, 5.30 - 6pm.

St Leonard's Church, Yarpole. All are welcome

**Please note change of date in November - Wednesday 13th.**



### Do you like singing ?? If so,

there is a friendly choir on your doorstep, which welcomes new members

### **The Birchpole Singers**

rehearse every week in Yarpole Church (Wednesday 7.15pm)

For more information, contact Steve Walter: [stevewltr7@gmail.com](mailto:stevewltr7@gmail.com); 07791490439

arts  
alive

FLICKS  
IN THE  
STICKS

# The Holdovers

Cert: 15 - 133 mins



Sat 29<sup>th</sup> Mar - 7.30 pm

Yarpole Parish Hall

Admission: Adults: £13 Child: £12

To book food: 01568 780250 and 07495 437359

This is a Flicks and Food event. Food is served at 6.30 and costs £8 per head. The film starts at 7.30 and costs £5.

You can come and see the film without food if you wish.

A curmudgeonly instructor at a New England prep school remains on campus during Christmas break to babysit a handful of students with nowhere to go. He soon forms an unlikely bond with a brainy but damaged troublemaker, and with the school's head cook, a woman who just lost a son in the Vietnam War.

Starring: Paul Giamatti, Tate Donovan, Carrie Preston



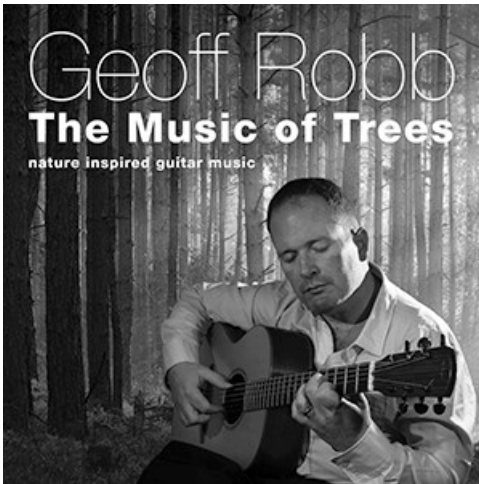
WHAT'S ON

WHAT'S ON

**Geoff Robb**  
**The Music of Trees**  
**22 March, 7.30 at St Leonard's**



Geoff Robb was the winner of the Brighton Fringe Live Music Award and his beautiful meditative compositions blend his classical training and background in healing with his love of Spanish and Celtic music.



He is currently touring his show 'The Music of Trees' which blends magical storytelling and virtuoso guitar that promises to transport you out into the woods.

If you love nature and enjoy beautiful acoustic guitar music then this is the show for you!

Inspired by the wonder of the natural world, 'The Music of Trees' weaves together storytelling, woodland folklore and mythology with a suite of original compositions featuring Geoff's signature blend of classical, jazz, Celtic and Spanish influences.

A master of the acoustic guitar with an intricate, richly harmonic style, Geoff has performed to audiences across the UK and Europe, at venues ranging from Buckingham Palace and The House of Commons to Glastonbury Festival. His show, 'The Music of Trees', earned him rave reviews at the 2022 Edinburgh Fringe.

Tickets will be available in Yarpole shop in a few weeks  
To secure a place early call Jeanette Kinsey 01568 780849  
or email [kinseyjeanette@gmail.com](mailto:kinseyjeanette@gmail.com)



## Walking Group



We meet regularly on the 2nd Friday and 4th Sunday of every month, normally at 10:30 by the church.

February walks: Friday 14 & Sunday 23

All are welcome to join our walks but please phone to check details, if you are not on the email list.

Contact: **Viv 782271** or [seiftonbatch@gmail.com](mailto:seiftonbatch@gmail.com)

## WHAT'S ON

## WHAT'S ON

### Dementia Matters Herefordshire Memory Cafés

Our Memory Cafés are designed to enable people with memory concerns, and their carers and families, to get out and meet like-minded people.

Every Café involves fun quizzes, activities and occasional guest speakers, with professional support, information and advice available. There is no need to book, so just pop along and come and meet our friendly team!

Join us at:

Leominster: Grange Court, Pinsley Road

Fourth Tuesday every Month 10.30-12.00 (FREE)

For more information please call: 01432 804480 or email  
[charlotte.banks@dementiamattershere.org.uk](mailto:charlotte.banks@dementiamattershere.org.uk)

We hope to see you there soon!

**DEMENTIA MATTERS**  
**HERE** herefordshire

**TIME TO CLEAN YOUR OVEN?  
LET US DO THE JOB YOU HATE**

AS SEEN ON  
TV



**Ovens Ranges Hobs Extractors  
Grills Microwaves BBQs AGAs**

**Call Rob or go online for your  
FREE quote!**

**07708 624094**  
**ovenclean.com**



**ovenclean**



**NEED ANY HELP  
WITH SMALL JOBS?**

Army Veteran recently retired who is honest, hard working reliable and affordable.

Very happy to help with any small jobs inside and out including putting up pictures, shelving, curtains, redecorating, hedge cutting, mowing lawns etc.

**Please contact Simon  
on 07846 259549**





## Orleton Evergreens 2025



- 27 Feb: Hannah Moore, talk about Mary's Meals  
 27 March: John Smith talk 'The Virgin Soldiers'  
 24 April: Outing to The Royal Mint, Llantrisant, lunch & tour  
 29 May: Spring lunch  
 26 June: 60th Anniversary tea  
 28 Aug: Dragonfly Cruises, canal boat trip Brecon  
 25 Sept: Malcom Penny, talk about National Trust, Brockhampton  
 30 Oct: Nigel Gibbons, Blood Biker  
 27 Nov: Ian Smith, talk 'Random Ramblings of a Retired Dentist'  
 11 Dec: Christmas lunch

All Welcome (50+)

Hall meetings at Orleton Village Large Hall 2.30

Further details contact Sue Turner 01584 831324, [sue.a.turner@gmail.com](mailto:sue.a.turner@gmail.com)

## Arts Society Lectures

Lively and interesting illustrated lectures on arts-related topics at Ludlow Assembly Rooms, 2.15 on the 3rd Wednesday of the month. Lectures from nationally recognised experts take about one hour.



Next meeting on **Wed 19 February 2025**

John Singer Sargent: The Private Radical  
 Gavin Plumley

Visitors are welcome, paying £8.00 on the door. Membership, which buys you eight lectures and reduced fees for outings and study days, costs £45.

More information: <https://www.theartsocietytemevalley.org.uk>

For help with transport contact:

Membership Secretary Jeff Walker on **01694 781489**



*Bin it? No way!*

First Saturday of the month 10.00 - 12.00 (last repairs). Next session: 1 Feb  
 Online bookings open two weeks before: <https://leominsterrepaircafe.org.uk>  
 Leominster Community Centre, Church Street, Leominster, HR6 8NJ

Refreshments available

Mechanical, household, electrical, toys, furniture, sewing repairs & tool sharpening

For more information email: [repaircafeleominster@googlegroups.com](mailto:repaircafeleominster@googlegroups.com)

Or find us on Facebook.

# EVENTS DIARY FOR FEBRUARY

## Events this month

Date	Venue	Event	Time
1st	Parish Hall	YPGNS Quiz	7.00
4th	Parish Hall	Parish Council meeting	7.00 - 9.00pm
5th	St Leonard's	Be Still	5.30 - 6pm
11th	Gallery Café	Tasty Tuesday	1.00
14th	Various	Walking Group	10.30am
19th	Gallery Café	Police Community Support Officer meeting	11.00
23rd	Various	Walking Group	10.30am
28th	4Cs	Parish Hall	11.00-12.00

## Regular Weekly Activities

Date	Venue	Event	Time
Mondays	Gallery Café	Chess	2.00-5.00pm
	Parish Hall	Zumba	6.00-7.00pm
Wednesdays	Parish Hall	T'ai Chi	10.00-11.00am
	Parish Hall	Art Group	2.00-4.30pm
	St Leonard's	Birchpole Slingers	7.15-9.30pm
Thursdays	Parish Hall	Pilates	10.45-11.45am
Fridays	Parish Hall	Bowls	7.30-9.30pm

See 'What's on' pages for more details of all events  
 Check [www.yarpole.org](http://www.yarpole.org) for up to date information and any changes



### **LEOMINSTER SHOPMOBILITY**



Did you know that you can borrow disability equipment and medical supplies from Leominster Shopmobility?

**THE SERVICE IS AVAILABLE FREE TO ANYONE WHO NEEDS IT**

**Morris Mews, High Street, Leominster HR6 8LZ. TEL: 01568 616755**

# LEOMINSTER OSTEOPATHS & THERAPIES CLINIC



Known for Our Expertise. Chosen for Our Care.

## Relieve Pain Restore Health

- ✓ Long-standing Expertise in Pain & Injury Relief Since 1989
- ✓ Find Out How Osteopathy Can Help Your Symptoms with a FREE Consultation. Call Now

## Hearing Care Clinic

- ✓ FREE Hearing Assessments: Maintain Your Ear Health
- ✓ Gold Standard Ear Wax Removal
- ✓ FREE Ear Wax Checks: Examine, Diagnose & Get Expert Advice

## Holistic Massage Treatments

- ✓ Bespoke Massages: Relieve Aches, Pains, Stress & Relax
- ✓ Deep Tissue, Hot Stones, Pregnancy Massages & More
- ✓ 1-2-1 Baby Massage Classes

## Nutritional Therapy

- ✓ Registered Nutritionist Specialising in Digestive, Hormonal & Blood Sugar Issues, Weight Management and More
- ✓ Lab Testing Available
- ✓ FREE Nutrition Consultations

## Foot Health Clinic

- ✓ Experience Relief with Foot Treatments, Provided by Experienced and Dedicated Foot Health Experts
- ✓ Expert Diabetic Foot Care
- ✓ FREE Foot Examinations

## Spinal Decompression (IDD) Therapy

- ✓ Unlock Relief: Targeted Treatment for Persistent Sciatica, Back, Neck & Leg Pain
- ✓ Book Your FREE IDD Therapy Consultation Today



LEOMINSTER OSTEOPATHS  
& THERAPIES

Find us next to the Co-op car park in Leominster

### TALK TO US

01568 610610  
enquiries@leominsterosteopaths.co.uk  
www.osteopathicclinic.co.uk



# OAK TREE FUNERAL SERVICES

*The Only Independent Family Funeral Directors*

*In Leominster*

**19 Broad Street, Leominster Tel: 01568 250030**

**(24 hour service)**

Email: [oaktreefuneralservices1@gmail.com](mailto:oaktreefuneralservices1@gmail.com)

[www.oaktreefuneralservices.co.uk](http://www.oaktreefuneralservices.co.uk)

## LOCAL NEWS AND NOTICES

### Come dancing!



When someone mentions Morris dancing, what do you think of? Men of a certain age waving hankies about? Think again – times have moved on! Kingsland now has its own women's Morris side called Pinsley Mill Morris and we're looking for more dancers: would you like to give it a try? All ages are welcome; currently the youngest member is in her forties and the oldest is in her seventies. Come along for just one evening to see whether you enjoy it (but be warned, it's addictive!).

Our dances come from the North West Morris tradition, originating in the mill towns of Lancashire and north Cheshire. In the 19th century the dances often accompanied the local rushcarts or Rose Queen carnivals, or were performed during Wakes Weeks, when the local mills closed for the week. The dance movements and patterns symbolise the action of the machinery in the old mills, and for some dances we carry antique bobbins that would have been used in the textile production process. All the dances are accompanied by folk tunes, played by a small group of musicians on a variety of instruments including fiddle, concertina and flute.

We practise on Tuesday evenings in the Kingsland Coronation Hall from 8 – 10pm, with a tea-break half way through. The members are really friendly and are very patient with beginners! It's so much fun - why not come along for a taster and see what you think?

To find out more, or for a lift to the hall, contact Sue Russell on [peterandsuerussell@btinternet.com](mailto:peterandsuerussell@btinternet.com), telephone 01568 780559.

### Job Vacancy at The Bell



The Bell at Yarpole, a community-owned pub, is looking for a temporary cleaner to cover our regular cleaner's planned absence in February/March/April. Final dates to be confirmed, but likely to be 6-12 weeks. We have a friendly, helpful team at the Bell and full support will be provided. We are looking for someone reliable, previous pub/restaurant cleaning experience helpful but not essential, as full training will be given. We are seeking someone 3 mornings a week, one of which is on a weekend. Some flexibility may be offered on days depending on pub opening. Own transport is needed due to the pub's rural location.

For further information please email [vc@themortimerCBS.org](mailto:vc@themortimerCBS.org)



## LOCAL NEWS AND NOTICES



### Calling all nervous musicians



I've been involved with music all my life, but I still frequently fall to bits when I have to perform in public. Do you have the same problem? People say that the answer lies in performing in public regularly so that you get used to it, but that's just not an option, so the problem never goes away. I've decided that this year things are going to change.

I'd like to start a small self-help group meeting regularly (maybe once a month?) to play to each other. It won't matter how short or how simple the pieces we perform, the point will be for us to gain confidence by getting used to playing to other people. I'm hoping that over time we will gradually lose the fear and find the pleasure, and hopefully make some new musical friends as well.

If you think you could benefit from this kind of supportive group, please email me on [peterandsuerussell@btinternet.com](mailto:peterandsuerussell@btinternet.com). I think I've wasted too many years being nervous, and if you feel the same get in touch with me now before your fear tells you not to!

Sue Russell

---

### Modern Jive Classes



"Oh dear, what have we started!"

Lesley and I met learning Modern Jive in Manchester 24 years ago. But we stopped going after moving to Cumbria in 2016. Although there are local Swing Jive groups, there are no *Modern Jive* classes anywhere in Hereford. So we thought why not see if there's any interest in Yarpole.

Lesley and I are not professionally qualified dance teachers, but we have helped many beginners learn to dance and we try to remember how it felt for us as complete dance novices.

Modern Jive is different from the faster, rock & roll or bouncy Lindy Hop type Jive. Its influences come from west coast swing, salsa, ballroom and Latin and can be danced to a wide variety of different music, from the forties to the noughties and lots in between. If you think you'd like to try, don't be shy and come and join us. No partners are required.

We meet in the Parish Hall starting at 7pm on either a Tuesday or a Sunday. If you'd like to join the Modern Jive WhatsApp Group, please text your details to 07974 193294.

Dave and Lesley Bradford

# LOCAL NEWS AND NOTICES

## Information from the Parish Council from Ofcom

The Parish Council has been in touch with Ofcom regarding poor mobile signal in Yarpole noting that digital systems rely on electricity/WiFi. It would be interesting to hear your thoughts and experience on this matter. The main points from their response are in the précis below:

*Phone calls were delivered over the Public Switched Telephone Network (PSTN). BT decided to retire this by 2027 with other providers following a similar timescale. All landline calls will be delivered over digital technology called Voice over Internet Protocol (VoIP), using broadband connection. This applies to everybody. The decision to retire the PSTN lies with the companies. The change is industry-led. Ofcom is continuing to work with communications providers regarding the migration.*

*Ofcom's role is to ensure consumers are protected from harm; experience minimal disruption and are protected however their landline is delivered. 'The future of fixed telephone services', provides general information; how the service will work, impact on consumers, Ofcom's role and expectations and guidance on access to emergency services. See: [https://www.ofcom.org.uk/data/assets/pdf\\_file/0032/137966/future-fixed-telephone-services.pdf](https://www.ofcom.org.uk/data/assets/pdf_file/0032/137966/future-fixed-telephone-services.pdf)*

*Ofcom regulation re access to emergency services (General Condition A3) still apply. Providers should take measures to ensure customers have uninterrupted access to emergency services. How this requirement can be met can be seen here. [https://www.ofcom.org.uk/data/assets/pdf\\_file/0016/123118/guidance-emergency-access-power-cut.pdf](https://www.ofcom.org.uk/data/assets/pdf_file/0016/123118/guidance-emergency-access-power-cut.pdf)*

*Ofcom supports this transition. Providers should ensure customers are migrated without disruption to their services and customers in vulnerable circumstances are given protection. If Ofcom is concerned that providers are not acting in line with the above, they will not hesitate to act as deemed appropriate.*

*If consumers feel their provider has not done this, they may raise their concerns with the provider directly by following the steps outlined within the company's complaints code of practice. This should detail their full complaints procedure and will be available through its website and customer services. Some service providers also print complaint information on the back of their phone bills."*

Maggie Brown, Clerk. [clerk@yarpolegroupparishcouncil.gov.uk](mailto:clerk@yarpolegroupparishcouncil.gov.uk)

*Readers will find it easier to access the links on the online version of the newsletter on the parish website, [www.yarpole.org](http://www.yarpole.org). Click on 'Yarpole Parish Magazine' in the black strip along the top, then scroll down and click on the current issue - Ed*

# LOCAL NEWS AND NOTICES

## Nature Needs You!



Are you interested in nature? Do you enjoy spotting birds, butterflies, bees and wild flowers?

If the answer to any of the above questions is 'yes' then you might like to join us in improving and maintaining the nectar beds in the churchyard and the wild flower areas. We meet probably five or six times a year, working for an hour at the most and then treating ourselves to coffee and cake from the cafe. If you have any special interests or knowledge it would be great if you could share this expertise. If you want to learn more about our native species then we can probably help with that too. We would love to have your company. Please contact Lynn or Gill at the following email addresses [gillhumphrey1605@gmail.com](mailto:gillhumphrey1605@gmail.com) or [lynnmargaretashton@gmail.com](mailto:lynnmargaretashton@gmail.com).

Gill Humphrey and Lynn Ashton

*Thank  
you*

Thank you to everyone who purchased a DVD from St. Leonard's before Christmas. The sale raised £100 for Crisis at Christmas charity for the homeless.

Lynn Ashton

# LUX WINDOWS

**Mike Thompson**

*...for all your local glazing needs*

With over 25 years experience in the Glazing Industry, Mike is well placed to meet all of your glazing needs with a thoughtful and conscientious approach

...including but not limited to:

Windows  
Doors  
Conservatories  
Porches  
Fascias  
Guttering  
Misted Units  
Repairs  
Glass Replacement

Contact Mike below to discuss your glazing needs and arrange a no obligation quote.

[mike@luxwindows.co.uk](mailto:mike@luxwindows.co.uk) | 07943 522948

**CERTASS**

*let the sun shine in...*

**qualitymark**  
ACCREDITED

# AppleMacMechanic

*for all Apple Mac Computers*

## Lee Jones

# 07875 267790



**Support**  
Repairs  
**Service**

Spares  
**Upgrades**  
Training

Covering Herefordshire and all surrounding counties  
Mobile service Competitive rates

[mail@applemacmechanic.co.uk](mailto:mail@applemacmechanic.co.uk)  
[www.applemacmechanic.co.uk](http://www.applemacmechanic.co.uk)



# YARPOLE COMMUNITY SHOP



**February 2025**

## **A healthy start to a New Year**

The feasting season is now behind us and as conspicuous consumption of chocolates and puddings etc recedes into the distance, we are seeing good sales of dried lentils and pearl barley - as well as the handy packs of soup mix pulses - as people start to make healthy & hearty broths and soups for the colder months.

We have expanded our range of savoury crackers and so the ever popular Stockans triangular thick oatcakes and the classic Jacobs crackers, Carrs melts and Nairns cheese and seeded oatcakes have been joined by some olive oil tortas with rosemary and thyme and Leksands multigrain crispbreads.

Fear not though - our ever popular range of fresh cakes and pastries continues and with a different selection each day it is always worth popping in to see what we have to tempt you!

Several customers expressed disappointment that they had bought their vegetables at the supermarket when they came in over Christmas and saw the good quality - sourced locally where possible - fruit and vegetables we stock. Made them think they should have come here first!

We get deliveries of fresh vegetables and fruit from Cherries and Berries Greengrocers every Thursday afternoon or Friday lunchtime.

## **An apology**

We are sorry for any inconvenience caused over the holiday period by our card payment system deciding to stop working and subsequent struggles to get it replaced over the Christmas and NY period.

All up and running well now though and thank you very much for your patience and understanding during this time.

Jon

## **SHOP AND POST OFFICE OPENING HOURS**

	<b>Shop</b>	<b>Post Office</b>
<b>Monday - Friday</b>	9am - 5pm	9am - 12noon
<b>Saturday</b>	9am - 1pm	9am - 12noon
<b>Sunday/Bank Holidays</b>	closed except for pre-ordered newspapers	

**Tel: 01568 780148 Email: [yarpoleshop@mail.com](mailto:yarpoleshop@mail.com)**

**Website: [www.yarpole.com](http://www.yarpole.com)**





## GALLERY CAFÉ



### Happy New Year from the Gallery Café!

Tasty Tuesday will be on Tuesday 11 February at 1pm.

Places will be limited so please book early.

#### Look for posters with our Valentine's menu!

Please inform us of any allergies; we are happy to cater for individual needs where possible. To book please email or call the café during opening hours using the contact details below, or drop in to see us in person. There will be a booking sheet on the tall cupboard.

Scared of IT? Look out for the posters for the next IT help session;  
we are hoping these will be monthly.

We have welcomed some new volunteers who are really enjoying the café; why don't you pop in and see what we do? You will be most welcome.

The café remains an important meeting place in the village and we need to be open every day!

Thank you to all the people who support the café – you are helping to keep us open.

Anna

### Gallery Café Opening Hours

Monday – Wednesday 10.30-12.30 for drinks & cakes

Thursday – Friday 10.30-3.00, serving lunch 12-2pm

Saturday 10.30 -12.30 for brunch

For enquiries/bookings:

Email - [gallerycafe@yarpole.org](mailto:gallerycafe@yarpole.org)

Phone (during opening hours only) - 01568 780594

Or drop in to see us in person.

Check [www.yarpole.org](http://www.yarpole.org)

Yarpole Facebook <https://www.facebook.com/GalleryCafeYarpole/>

# Employer of the Year in Health and Social Care

"I feel respected and supported. There are always opportunities to further your career and interests. Being supported in and out of work means a lot"

At the heart of everything we do is our passion for care and improving the quality of life for disabled and elderly people.

As a not for profit organisation we reinvest surplus income into improving services for our service users and investing in our employees; our most valuable asset making us the

#EmployerOfTheYear

## Join Award Winning SIL

Work for SIL and get all of this and more...

- Full pay from day one including training
- Enhanced Maternity/Paternity payments and sick pay scheme
- Paid training and career development opportunities
- Supportive work environment
- Family feel with social events programme
- Blue Light Card discount scheme

Apply now...

☎ 01568 616653

✉ jobs@s4il.co.uk

www.s4il.co.uk/vacancies

**sil**  
services for  
independent  
living



**Farm Shop** – stockists of local and bespoke products of the finest quality and affordable prices. As well as many products home-cooked on site with any quantities able to be made for event/gatherings.

**Café** - Freshly prepared meals to order showcasing the amazing quality products our area and team produce.

**Cakes, traybakes and treats** available all day along with a vast array of drinks including freshly ground luxury coffee and our speciality thick milkshakes.

You don't need a main course to enjoy our **Deluxe Whippy ice-cream** in a classic cone or as a sundae pot.

We've also teamed up with a number of dealers bringing a great range of **salvage items** and **garden accessories** as well as a number of **artists** and **crafts professionals**.

**Open Wednesday to Sunday 9.30am to 5pm (Saturday and Sunday 4pm close)**

# THE BODY CLINIC LEOMINSTER

Holistic Therapies and Advice for  
Health - Pain - Mobility - Wellbeing



## OUR SERVICES

- ✔ Health Assessments
- ✔ Clinical and Holistic Massage
- ✔ Acupuncture
- ✔ Osteopathy
- ✔ Occupational Therapy
- ✔ Physiotherapy
- ✔ Mole screening and Removal
- ✔ Counselling
- ✔ Emotional Support Therapy
- ✔ Hypnotherapy
- ✔ Reflexology
- ✔ Food Intolerance Testing
- ✔ Menopause Coaching
- ✔ Holistic Facials

Get in touch to  
book your  
£30 Health  
Assessment

17 West Street  
Leominster

01568 368 907 07493 078 566

[www.thebodyclinicleominster.co.uk](http://www.thebodyclinicleominster.co.uk)



# Leominster Motors



01568612337



[leominstermotors.co.U.K.](http://leominstermotors.co.U.K.)



## Post Christmas Blues

January can be a difficult time of year. We have had the celebration of Christmas and the joy that can bring and now we are faced with short cold days and long winter nights. We hear how our hospitals are struggling to cope with the winter flu season and for some of us this time of year is difficult as we remember those who have died in the cold winter months. But we should draw solace that Advent and Christmas were the beginning of the Church year, which in a few month's time will lead to Easter and a celebration of a new beginning for us all. When Easter comes we can celebrate that Christ sacrificed himself so that we may be re-born into life everlasting.

Just as winter moves into spring and the beginning of new life in the natural world, so the beginning of the Church year will move us towards the new life of salvation that Easter brings.

*Lord:*

*In the midst of winter, when days are cold and wind can pierce, remind us of the warmth of your love.*

*In the midst of winter, when days are short, dawn comes late, and dusk arrives early, remind us that in the darkness your light still shines.*

*In the midst of winter, when the flowers of spring still lie hidden in the earth, when leaves are off the trees, and the world can seem bleak, remind us that Easter is but a short time away.*

*And when in our lives we feel as if we are experiencing a season of winter, reach out to us with the power of your resurrection, so that we may feel the warmth of your love and see your light that alone can take away the darkness of our soul.*

*Cal Wick*

Jane Higgins

### **STOP PRESS!**

Don't forget to trim your hedges before the birds start nesting.  
Thanks to Di Hill for this reminder.







Happy New Year to one and all. As we move into the new calendar year we should briefly look back on an important period for St. Leonard's Management (SLM): a year that was a bumper one for the Gallery Café and saw the arrival of 4 new trustees. There is much to celebrate but like Janus, the Roman god of January, let us look to the future.

As the god of transitions and dualities, Janus is portrayed with two faces: one facing the past, and one facing the future. He also holds a key in his right hand, which symbolizes his protection of doors, gates, thresholds, and other separations or openings between spatial boundaries. Janus was regarded as the god of new beginnings, the god of the transition from youth to adulthood as well as the god of moving from war to peace.



SLM's motto is '*Preserving our past, building our future*'. 2025 is going to be an important year for our beautiful church, our versatile community hub, our outstanding Gallery Café and the excellent shop and Post Office. We await the quinquennial report from the buildings inspector who visited in December to assess how well our historic Bell Tower and church are bearing up over time. We expect to have detailed recommendations for repairs/maintenance that are essential as well as those that should be implemented over time. Consequently, our 4 trustees will be pulling together a cunning plan to keep our superb facilities in tip top order. We hope to share this with you in due course.

At the same time, we are seeking to improve facilities further, including automating our existing entrance doors to the church/community hub so that access is easier for everyone. Estimates of around £5,000 have been received. As automated doors will be a significant benefit to the whole community, we are inviting contributions towards the project's costs from other community groups. Also, we are thinking of ways to firmly place our historic Bell Tower on every visitor's must-see list, as we have been advised that, as a historic feature, it is a unique monument to promote and truly celebrate.

We are also working with the PCC and the Parish Hall Committee to explore ways of improving the storage of key community resources so that they are more easily accessible, as well as to improve their overall management.

There is much to look forward to, literally. We hope that all people in Yarpole Parish and the wider community will continue to share with SLM in the challenges that are ahead of us. If you have additional ideas for future improvements to our work, please do not hesitate to get in touch: in the first instance, to Gordon at [gordon.ewing@me.com](mailto:gordon.ewing@me.com). Hopefully, this time next year we can say that 2025 was truly memorable.

Gordon Ewing - Trustee




# MARKHAMSGARAGE<sup>LTD</sup>

TEL: 01568 708208 FAX: 01568 709059 EMAIL: [INFO@MARKHAMSGARAGE.COM](mailto:INFO@MARKHAMSGARAGE.COM)

- Servicing and repairs to all makes of cars and light commercial vehicles
- Electronic engine management & diagnostics
  - MOT Testing station
  - Air conditioning
- Fully functional tyre bay
- 4 wheel laser alignment
- Courtesy car available



Vehicle & Operator Services Agency

[www.markhamsgarage.com](http://www.markhamsgarage.com) 

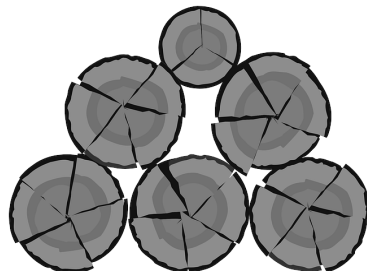
## FIREWOOD SUPPLIES

*Seasoned hardwood available  
Delivered in a cubic metre bag  
Reliable friendly service  
Free local delivery*

Call Steve Mantle  
07980 775838  
01568 615565 (Evenings)



Company: Steven Mantle  
Firewood Supplies  
Certificate No: WS989/00001



# Mayglóthling

## Responsible Waste Management

From septic tanks and sewage treatment plants to industrial cleaning and transport, we are your local waste management specialists. We ensure all waste is recycled or disposed of in an environmentally friendly way. Please do get in touch.

- Septic tank emptying
- Drains unblocking
- Drain surveys & repairs
- New system installation

📞 01544 230364    ✉ sales@mayglóthling.com



TAKING  
CARE  
OF WASTE

## Looking for your next adventure?

Volunteers at Croft Castle bring the stories and rich history of Croft to life for visitors.

Scan the QR code, call **01568 780246** or email **croftcastle@nationaltrust.org.uk** to find out more.



National  
Trust

[nationaltrust.org.uk/croft-castle-and-parkland](https://nationaltrust.org.uk/croft-castle-and-parkland)



## PARISH HALL

February 2025

Parish hall activities are now on our new events calendar (on page 10 this month)

To make a booking please contact Amanda Hordern

01568 701996 / [parishhall@yarpole.org](mailto:parishhall@yarpole.org). Or go to [www.yarpole.com](http://www.yarpole.com)

and click on 'Church & Parish Hall Bookings' to book online.

If you are interested in joining one of the classes, please email Amanda who will put you in touch with the class organiser.

### 200 Club

These are the winning numbers for the last two months:

December 2024:

32: £50

80: £20

94: £15

60: £10

January 2025:

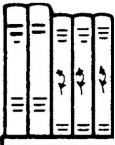
43 £50

158 £20

16 £15

136 £10

Jan Tandy - Lottery Administrator



Don't forget that books can still be taken out from the Parish Hall Library whenever the building is open for an event. Just sign the book and there is no time limit.

DVDs and blu-rays of recent Flicks films are also available to borrow.



## COLIN VICKRESS

### Building & Renovations

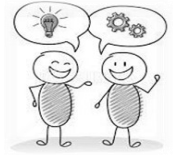
New builds, extensions & refurbishments

07968 768011 / 01568 612699

[colinbuild@gmail.com](mailto:colinbuild@gmail.com)



## YARPOLE PARISH GOOD NEIGHBOUR SCHEME



Yarpole Talk  
Community

***Our mission: To provide the kind of practical assistance and support that a good neighbour would offer.***

**07885 525776**

### What do we do?

- We help with travel to shops, hair and medical appointments, small tasks, light gardening and DIY, admin, computer issues, company and pet care!
- Collect the prescriptions each week to ensure your medicine is waiting for you.
- Hold the 4cs – Chat, Coffee, Company and Cake – all welcome!

**Your donations help us to pay our expenses, thank you clients and donors!**

### **Thank you for supporting the Big Quiz**

It is our one fund-raising event every year and there will be a report next month.

The deadline for ticket sales has passed but a few more may still be available.

Parish Hall, Saturday 1 February, 7.00, bring your own picnic supper. £6.00 per person.

Contact Anna Morley [robanna.morley@btinternet.com](mailto:robanna.morley@btinternet.com) for more information.

### **4Cs**

Our 4Cs meetings in the Parish Hall continue usually on the 4th Friday of each month. Upcoming guests are, on Friday February 28th, Lorna Firth and friends with

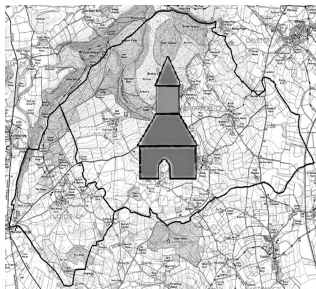
"A Bit of a Blow".

Intrigued? Come and join us, in the Parish Hall, 10.45 onwards. Always accompanied, of course, by Company, Chat, Coffee and Cake.

Look in next month's newsletter for our spring and summer activities, already in the pipeline.

Need a lift? Ring Val on 01568 780807 or Avis on 01568 780874

See you there.



## Yarpole Group Parish Council

May I wish all residents a healthy and prosperous 2025. The **budget** for 2025/26 was set in December at £37,387.02 with a **Precept** of £31,000.00, a 6.9% rise on last year. This equates to approximately £82.20 for a Band D property, an increase of approximately £5.30 for the year. The difference between the budget and the Precept will be made up from General Reserves.

Mr Tim Ware has volunteered to be the new **Tree Warden** for which he is thanked. He can be contacted by email at [timthegribyn@gmail.com](mailto:timthegribyn@gmail.com).

The **Green Lane** sign (near the phone box) has been refurbished thanks to assistance from volunteers at Orleton.

Community Meadow. **Chalford Timber Supplies** donated wood chips used at the Community Meadow planting day in 2024. They are sincerely thanked for their generosity.

Road sweeping at Green Lane was carried out in December. The cost is yet to be confirmed.

The Lengthsman cleared grips on Welshman's Lane, and further drainage work, funded by a grant from Herefordshire Council, will be carried out soon.

Concerns were raised about flooding in Yarpole and the potential effect of the recently installed culvert in the brook near Mulberry Meadow. Cllr Hurcomb is in discussion with Herefordshire Council about this. Whether to set up a Flood Group and working with Luston Group Parish, which has similar issues, is being considered. Following a meeting with Herefordshire Council/Orleton Council/Cllr Hurcomb attended by Cllr Hill, the Herefordshire Council Head of Planning agreed to engage with Welsh Water when considering allocation of land for development, as part of development plan process. Importance of highlighting this when responding to planning applications was noted, reminding Planners to ensure capacity for treating household sewage is checked.

Heavy Goods Vehicles carrying agricultural waste continue to drive through Lucton. The damage to the highway has been noted by the Locality Steward who has informed the appropriate team at Balfour Beatty. A planning application for the installation of the Lucton defibrillator has been validated and will be decided soon.

Grants to the Parochial Church Council were agreed. £1,364 for burial ground maintenance, and an additional £225 following damage to trees in Storm Bert.

The next scheduled meetings are 7pm at Yarpole Parish Hall on Tuesdays 4 February, 4 March and 1 April 2025. You are cordially invited to attend.

The Parish Council has also been in contact with Ofcom regarding the poor mobile phone signal in Yarpole, as reported on page 14.

Maggie Brown, Clerk. [clerk@yarpolegroupparishcouncil.gov.uk](mailto:clerk@yarpolegroupparishcouncil.gov.uk)



## **News from our County Councillor**

Let me start by saying Happy New Year to you all. As I sit writing, the temperature is a chilly -5°C and although we may be out of the freeze by the time you read this, please do take care on the roads and pavements. If you come across a yellow grit bin that is empty, do let me know and I will arrange for the supply to be replenished.

I have always tried to avoid national issues and politics in this column; however, several developments over the December period mean that unfortunately, this time I cannot. I am referring of course to the publication of the National Planning Policy Framework (NPPF), the Draft Local Government Finance arrangements and the Devolution White Paper. I would forgive you at this stage if you thought about stopping reading, however, please bear with me as all three of these have sizeable impacts for the future of Herefordshire.

The NPPF is the document that sets out the Government's approach to planning and development including housing targets. Previously, Herefordshire needed to find just over 16,000 houses in the next Local Plan (which covers a 20 year period). The Government has increased this number to over 27,000 and made this a requirement from December 2024. The impact of this is that Herefordshire no longer has the 5 year development land supply (it is now just over 3) which is necessary to give weight to Neighbourhood Development Plans (NDP) which are older than 5 years. This means that developers may be able to overcome issues that planning applications were previously rejected on as a result of the NDP (Settlement boundaries etc). I do not have enough space here to elaborate further but please email me if you would like to hear more.

The LGF announcements gave with one hand and took away with another. Whilst we received much needed increases for social care, we lost the Rural Services Delivery Grant which had been worth £7m to Herefordshire. With the social care increase being used to offset the increasing demand for those services, and pressures within the system totalling £26m we have only been able to balance the budget by proposing a 4.99% increase in Council Tax (raising approximately £7m) and an equivalent package of spending controls and savings.

Finally, the Devolution White Paper. Firstly, I should state for the record that I am fundamentally opposed to any form of devolution which will reduce local accountability, remove decisions from Herefordshire or see Herefordshire Council merge with another authority. The picture locally is unclear, however talk seems to be around a three counties mayoral model (including Worcestershire and Gloucestershire) with Herefordshire retaining its current status, powers and boundaries. The government has made clear that devolution is non-negotiable and any councils which do not participate will have it mandated for them. So our focus now must be on getting the best deal for Herefordshire and its residents. I will keep you posted on ongoing discussions.

Cllr Dan Hurcomb

Email: [dan.hurcomb@herefordshire.gov.uk](mailto:dan.hurcomb@herefordshire.gov.uk) Telephone: 07837 726821

Letters: Cllr Hurcomb c/o Democratic Services, Plough Lane, Hereford, HR4 0LE



The Mortimer Community Benefit Society, owner of the Bell at Yarpole. Managed for the benefit of the community.



New Year's Eve seems an age ago. But 'Wasn't That a Party!' And the prize for the costume that caused the most comments goes to..... The Schoolboy.

Again many thanks to everyone who turned up to help for the Bell 2 day clean up. Committee members are extremely grateful for all the hard work.

A New Year and new challenges. A year ago we were just starting out on our journey. Who would have thought that in those 12 months the Bell would generate an income in excess of £160,000.00 ex VAT? The challenge for the coming 12 months is to improve on that income.

For the Bell the next 2 months will be critical. There will be very little tourism until Easter and so we are reliant on local trade. Without the support of YOU, the Parishioners, we will be facing a difficult financial period. The Bell has a very small financial reserve, despite our 160k takings, as we have continued to pay off our loans. It is interesting to note that the Bell is now the largest employer in the village. We employ a total of 10 people on a part-time basis.

New for Sundays in February. We will be serving breakfasts between 10.30am and 11.30am along with our coffee service. Enjoy a cappuccino, latte, Americano or a flat white; add a breakfast and make Sunday special.

We will be serving a Valentine's menu on Friday 14 and Saturday 15 February. (Booking required, please).

There will be a Chinese-style theme night on Thursday, 27 February. (Booking required, please).

The Quiz will be returning to its usual slot of the first Sunday of the month in February.

*Keep an eye out on our Facebook page or website for all our events at the Bell at Yarpole.*

You can now book a table directly via the website. No need to email or phone. Simple!

As we have said before, we are a small committee for the amount of work involved in running the Bell. We would genuinely love to hear from anyone out there who would like to share their knowledge and experience and join the managing committee to really help the Bell to prosper in 2025.

MCBS

Email: [dine@thebellatyarpole.co.uk](mailto:dine@thebellatyarpole.co.uk) Phone: 01568 601110

# Yarpole with Croft and Lucton PCC



Yarpole needs YOUR HELP, please.

Our church building houses the hub of our community, providing so many activities and functions appealing to all villagers and visitors of all ages. The running of the church, shop and café is effective because of parishioners who volunteer with their time.

To make sure that the church continues to function, not only as a place to pick up your groceries and newspaper, or to provide a welcoming space for coffee, cake and lunch, but also for a variety of services, and for weddings, baptisms and funerals, as the heart of our community, the Parochial Church Council manages such functions.

BUT, in March this year the PCC sees the departure of several long-serving and vital members, who have given service over a very long time, leaving us really short-handed.

YOUR RELIGION, or lack of one, is really NOT an issue. Please give serious consideration to becoming one of our small number, working for the benefit of all in our community. Do your bit to help our thriving community to continue to flourish in the way it always has...Your contribution is important if you value our hub.

Please, if you would like to hear more of what the PCC is - without obligation - and we hope you do want to be curious, email Val on [valainsworth006@gmail.com](mailto:valainsworth006@gmail.com)

Or ring 01568 780807 to find out how a little help goes a very long way.

Think about it! And respond! Your community needs YOU.

Val Ainsworth

---

## Yarpole Friendship Network

As previously reported in The Parishioner, it is hoped to set up a Friendship Network in our neighbourhood. If you have ever wished that you could meet more people in and around the village, this could be for you. You could meet up with one or two others in someone's home or the café, go shopping together, watch a movie on television or in a local town, or just have telephone contact with others.

For more information contact Anna on [robanna.morley@btinternet.com](mailto:robanna.morley@btinternet.com) or 780321.

  
**Sea Dreams**  
*Saundersfoot*

**A luxury self-catering cottage just minutes  
from the beach in Saundersfoot,  
Pembrokeshire.**

[seadreamssaundersfoot.co.uk](http://seadreamssaundersfoot.co.uk)  
[stay@holidaysaundersfoot.co.uk](mailto:stay@holidaysaundersfoot.co.uk)  
Tel 07885 604720



**Ian Mackay: Electrician**

Quick response, local and reliable  
No-obligation fixed quotes

---

Domestic installation and repairs  
Landlord & homeowner safety inspections  
Condition reports for house sales

[ian.gf.mackay@gmail.com](mailto:ian.gf.mackay@gmail.com)

07736 303 297 or 07396 578 662



# Talk Community Champions



Do you have a passion for helping others and want to support your community by becoming a Talk Community Champion?

A Talk Community champion is someone who can support the wellbeing of those around them by sharing information and connecting people to services and support.

Perhaps you run the local playgroup or work in the village shop, and already have connections within the community? Maybe you're a local business and you'd like to find a way to connect your employees with information and advice, to help them to live healthier and happier lives; from supporting them to quit smoking to accessing advice around housing, or cost of living support. Or you might just be a helpful friend and neighbour!

All Talk Community Champions will be offered training opportunities, support and guidance.

If you think this could be for you, or perhaps you would like to nominate someone you know, please contact the team on [talkcommunitychampions@herefordshire.gov.uk](mailto:talkcommunitychampions@herefordshire.gov.uk)



Private Carer and Personal Assistant

If you want full control over the care and support that you or a loved one receives, then the best way of doing this is to hire your own private carer. Fully qualified foot health practitioner.

Contact me today to discuss all your requirements.

Ring Nina 07375 520 646

## TOWN & COUNTRY

PLASTERING & DAMP PROOFING

Plastering

Rendering

Damp proofing

**For Free Quotes  
Call Dan  
07701 097 897**

Email  
[townandcountryplastering@gmail.com](mailto:townandcountryplastering@gmail.com)



THE CHURCH  
OF ENGLAND

# DIOCESE OF HEREFORD

February 2025

The New Year is underway, and I am standing in for Bishop Richard while he is on sabbatical. He has given us themes for recent years: Prayer, Faith, and now it's Engagement – with Celebration to come! There's a lovely sense of flow between them, I think. Let me say what I mean...

Our church is rooted in Christ, and our relationship with Him in prayer is where it all begins. Without the roots, nothing else will grow. St John loves to use the word "Abiding" for this relationship – one of peace and permanence, of being where we belong. "Abide in me as I abide in you." (John 15.4) When we find our place, we find our peace and become people of peace. We are seeing a global increase in anxiety, and "We are Farming Minds" has shown how that is true locally, too. If we can be people of peace and offer places of peace, we can make a difference in real, local lives.

Out of the roots of prayer come shoots of faith: "I am the vine; you are the branches." (John 15.5) As we abide in Christ, so we come to trust Him more as the well-spring of our life. We seek security in all sorts of things, some good, some less so; but also realise that what they offer is limited and sometimes deceptive. I sensed this Christmas afresh how fundamental the Christmas presence of Christ was compared with any of the presents life can bring, right here, in a broken world of lost homes and lives. I have friends on my heart for whom Christmas brought bad news not good, and my longing for them is that they will know Christ's presence in their predicaments.

Then, the shoots of faith lead to the fruits of engagement, as lives are touched and changed for the better. "Those who abide in me and I in them bear much fruit." (John 15.5) It may well be that the need to find peace and solace in a disastrous world first draws us to the church. But as Christ grows in us and we in Him, we realise that the church is not an escape craft from the world but a landing craft into it. God's great desire is that the whole world should be saved. "God so loved the world that he gave his only Son so that everyone who believes in Him may not perish but may have eternal life." (John 3,16) And that is worth a Year of Engagement in God's mission with the world around us now, and a Year of Celebration when it comes!

Bishop David Thomson



## Victoria Allen Funeral Services

8 Charlton Rise, Ludlow, Shropshire  
SY8 1ND  
01584 879035

Email: [vafs@btinternet.com](mailto:vafs@btinternet.com)  
[www.vallenfuneralsludlow.co.uk](http://www.vallenfuneralsludlow.co.uk)

An Independent Family Business  
All Areas Covered, 24 Hour Service

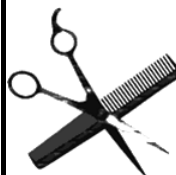
## DAWN

## Mobile Hairdresser

Hairdressing  
for all the family

Fully qualified

**Dawn Goodwin**



**01568 770387**

# Norris and Miles SOLICITORS

**01584 810575**

6 Market Square  
Tenbury Wells  
WR15 8BW

[www.norrisandmiles.co.uk](http://www.norrisandmiles.co.uk)  
[post@norrisandmiles.co.uk](mailto:post@norrisandmiles.co.uk)

## Local Legal Advice

Wills and Powers of Attorney

Property sale and purchase

Administration of Estates and Tax Planning

Business and farm sales, purchase and  
Tenancies

Grant and Review of Easements and  
Covenants

Divorce, separation, finance and children

Prenups and Cohabitation Agreements



Leominster | 01568 610 600

Hereford | 01432 344 779


Local People - Expert Knowledge - National Marketing

[www.bill-jackson.co.uk](http://www.bill-jackson.co.uk)

# jackson

property

Hereford - Leominster - Shrewsbury - Cheshire - Mayfair  
Sales - Lettings - Auctions - Commercials - Land & New Homes

Proud supporters of  **The Cart Shed** charity





# C.P. AERIALS

**Cliff Price**



TV Aerials, Satellites and Digital Installed  
TV and Cameras Installed  
FreeView and FreeSat Installed  
Sky HD Systems & DAB Aerials  
Multiroom Systems  
Free Quotations

**Tel: 01544 388647**

**Mob: 07971 534080**



[cpaerials@btinternet.com](mailto:cpaerials@btinternet.com)



David Ward

firewood



Locally sourced  
from managed  
woodland – legal  
and sustainable.

Local, dependable and a consistent supplier of  
seasoned/kiln-dried hard and soft wood firewood.

Cut and split to suit your requirements. Delivered in 1.2 cubic  
metre bags: no need to restack after delivery.  
Small delivery vehicle fitted with a crane meaning we can deliver  
to most locations.

**Call David to discuss your requirements**  
**07866 441154**



# ORLETON AND DISTRICT GARDENING CLUB

Tuesday 25th of February **Adam Alexander** presents a talk entitled:

## **The Accidental Plant Breeder**

Adam has had a passion for growing since childhood and has been on a journey of discovery and learning after becoming interested in rare, endangered and, of course, delicious fruit and vegetables.

He has used his film- making skills to support his interest in horticulture.

Orleton Village Hall. 7.15pm for 8pm start. Non-members £2.50 including refreshments. Annual membership £15

[www.ortetongardeningclub.co.uk](http://www.ortetongardeningclub.co.uk).

## **Yarpole Men's Shed**



**What is the Yarpole Men's Shed?** The Men's Shed is a place where men from the local area can meet and find companionship and purpose through social events and community-based activities. The purpose of the Men's Shed Association has always been to focus on men's mental well-being, overcoming social isolation and finding purpose, especially among men who are no longer working.

**What are our current projects?** We're building our own Shed and top of our list is getting it finished. Most of the external construction has been completed and the next phases are to finish the interior and get an electricity supply. When this is done we can start using the shed as our dedicated workshop and hub for our get-togethers.

We're also providing weekly safety and maintenance checks at St. Leonard's Church and helping out with jobs at the The Bell, the community shop and the Gallery Café.

**Are any special skills required to be a part of the Men's Shed?** No! Although some of our members enjoy using their DIY skills and experience we have other members who just like to get together for a chat, a laugh and a cup of tea.

**Do we want more people to get involved?** We are looking for more men to join so that we can build up our membership. Whether you're interested in helping with DIY projects, just socialising or you feel you would like to get involved in developing the group's activities, we would like to hear from you.

**Would like to find out more about us?** The best ways to get in touch are to email us at [yarpolshed@gmail.com](mailto:yarpolshed@gmail.com) or to let one of our existing members know you're interested. We're a friendly, supportive group and you'll be welcome to come along to a meeting and chat with some members of our group.

Trevor Edwards

# THE CURIOUS GARDENER

## In 2025 I will not...

I'm a slow learner. Each year I make the same mistakes in the garden, and each year I promise myself that next year will be different.... Maybe 2025 will be the year I break the pattern.

1. I swear I'll check there aren't any teaspoons in the compost caddy before I chuck the contents into the compost bin, instead of realising we're short of spoons and trying to find them a week later. (I never found the teapot lid.)
2. I promise I'll make sure the clematis shoots are spread nicely over the wire on the wall in a fan shape. I definitely will not allow them to grow straight up in a narrow column until they're three feet higher than the wall (at which point they fall over and make a hideous tangled mess).
3. Never again will I put my tools in the barrow with the weeds or prunings (I've lost count of the number of bits of kit I've lost that way). And if I realise that I've left my secateurs somewhere in the garden I'll go and find them straight away, instead of leaving them to be run over by the lawn mower.
4. This year I'll plan my veg planting layout before I buy the seeds, instead of being wildly over-optimistic and thinking I can fit Sutton's entire catalogue into two small raised beds.
5. Never again will I leave my watering can outside where snails can crawl in and drown (because I never notice, and when I try to use the can they get wedged in the spout. Poking out a decomposed snail with a cane is peculiarly unpleasant.)

There are probably another half-dozen resolutions that I could usefully make, but let's start small. My track record with New Year resolutions isn't great, but maybe, with all the Parishioner readers as witnesses, this year really will be different. *(Note from husband: Don't hold your breath.)*

Sue Russell

### Grafted Apple trees

2-3 year old named dessert, cookers, cider varieties  
In pots—£20 (discount for bulk)

Easy to look after 'til you've decided where to plant!  
Discovery, Ashmead's, Kernel, Russets & more...

Root stock: M25 vigorous;

M111 & MM106 semi-vigorous

Advice on tree/orchard management also provided

Contact Chris, **01584 831195**

Waterloo Farm, SY8 4JG

**applewoodcourses@yahoo.com**

### Stacey Gardner Foot Health



Foot care in your own home

Routine appointments include the treatment of;  
toenail care, corns, callus, fungal infections,  
cracked heel care, diabetic foot care.

For more information or to book an appointment  
please call:

**01568 368306 or 07540566871**

Registered with the British Association of Foot Health  
Professionals

# Mappa Mundi

You may not know this, but just 18 miles south of Yarpole is hanging one of the great wonders of the medieval world. To find out more, read on....

Paul Humphrey

Hereford Cathedral is famous for its Chained Library, the Three Choirs festival, but probably the Hereford Mappa Mundi most of all. You couldn't use it to find your way anywhere. Unlike modern maps, it shows Christendom's cities surrounded by ancient myths, strange beasts and deformed races at the ends of the Earth. It shows geography, ethnography and history – and especially the destiny of humankind.

It was created around the year 1300, and is the largest and most complete medieval map found anywhere in the country. The name *Mappa Mundi* translates literally as Cloth of the World. It was (probably) drawn in Lincoln on a single calf skin and brought immediately to Hereford, where it has hung ever since.

Outside of the world's circumference are four gilded capitals that spell out *MORS* (death), and at the top of the map is a typical medieval doomsday scene. Christ, enthroned, displays the wounds of crucifixion, while at His feet Mary intercedes for the souls of humanity.

The map was designed to a plan first created by Isidore, Archbishop of Seville, in the 7<sup>th</sup> Century. It follows a T-O design: the circular world is divided into three sections, with Jerusalem in the centre. Asia covers the top half of the map, (above the T), Europe the bottom left and Africa the bottom right. The Americas and Australia, unknown to Europeans at the time, are nowhere to be seen. The map faces East, to represent the rising sun. The large green area in the middle is the Mediterranean Sea.

The British Isles lie at the bottom left of the map. Local interest includes Hereford on the River Wye, as well as an outsized Clee Hill lying near the River Severn.

The timing of its arrival in Hereford is significant. The Bishop of Hereford at the time, Richard Swinfield, was pushing for the canonization of his predecessor, Thomas Cantilupe, and was establishing Hereford as a centre of pilgrimage.

The map shows many stories from the Bible: at the top of the map there is the Garden of Eden, while in modern day Turkey you can find Noah's Ark. The Tower of Babel sits in Iraq, and in Egypt can be found Joseph's storehouses. Leaving Egypt, a line shows the flight of the Israelites across the Red Sea, circling round in the wilderness before crossing the River Jordan back into the promised land. Outside Jerusalem you can see Christ crucified, with Bethlehem just to the south.

Interestingly, Ancient Greek myths are also visible: on the shores of the Black Sea you can find the Golden Ram which Jason and the Argonauts sought, on Crete is the labyrinth of King Minos while at the bottom of the map, the Strait of Gibraltar shows the Columns of Hercules.

Animals are visible all over the map, some real and some mythological. All pictures of the animals are found in bestiaries from the middle ages; there is an elephant, lion, leopard, centaur, unicorn, rhinoceros, dragon, salamander, mandrake, phoenix, camel and many more!

Around the edges of the map, and especially in southern Africa, are weird people: Blemmyes (*see right*), with no heads but their faces in their chests, Sciapods with one giant foot, and Cynocephali with heads as dogs.

The original map sits in the exhibition at Hereford Cathedral, next to the Chained Library. Opening hours are 10am – 5pm, Monday – Saturday. It is well worth a visit.



William Talbot-Ponsonby

*This article is produced by request following William's talk for the 4Cs in November - Ed*

## Need a building surveyor?



**RICS**

- Structural surveys/costings
- Architectural drawing
- Planning permissions
- Listed building consents
- Building regs applications

*Particular sympathy for older properties*

**Barrie Morgan MRICS MCIQB**

**01568 780 761**

*Rosie's*  
**Grooming**  
*Room*

City &  
Guilds  
Qualified  
dog groomer



*Caring and professional*



**01568 780855**

[www.rosiesgrooming.co.uk](http://www.rosiesgrooming.co.uk)

**KC**  
**ELECTRICAL**  
**SERVICES**  
(Hfds) LTD

**Tom Jenkins**

M. 07446 130 883

[tomkcelectricalservices@gmail.com](mailto:tomkcelectricalservices@gmail.com)



**Oven**  
**Wizards**<sup>TM</sup>

We clean your oven...so you don't have to

Call today to have your oven, hob, extractor,  
microwave or Aga professionally cleaned

**Colin Hadley**

**01885 400337 07817 477850**

Email: [colinhadley@ovenwizards.com](mailto:colinhadley@ovenwizards.com)

## OLD FASHIONED GARDENER

**SHAUN YAPP**

48, Mortimer Drive, Orleton, Ludlow SY8 4JW

Tel 01568 780929

Mobile 07876197770



WEEDING  
LAWN MOWING  
PRUNING  
STRIMMING  
FLOWERBED EDGING  
HEDGE CUTTING

## **Firewood for sale**



**tel 01568 780414**

Firenze Catering  
for all occasions

Jackie Thomas



07526212176 / 01584877190  
[firenzecatering66@gmail.com](mailto:firenzecatering66@gmail.com)

*Phil Mundy*

**Chimney Sweep**

*ICS Trained & fully insured*

**Tel: 01568 780417**

**Mob: 07837 935 102**



**Looking for new flooring?**

Why not pop down to J Stokes Home Flooring, Leominster's largest flooring showroom?

Luxurious flooring for all areas of your home.

Award winning brands  
Brintons, Cormar, Karndeans...

**Carpets/LVT/Sisal/Wood**

Showroom Opening Hours:

Tuesday - Friday 09:00-16:00

Saturday 09:00 - 13:00

**01568 610760**

# J STOKES

## HOME FLOORING



THE CARPET FOUNDATION

**Unit 3, Barrington Business Centre, Glendower Road, Leominster, HR6 0RL**

**Looking for a better nights sleep?**

Why not pop down to The bed room, Leominster's largest bed showroom?

Beds for all types of sleepers  
human and canine.

Award winning brands  
Silentnight & Rest Assured

**Mattresses/Headboards/Bases**

Showroom Opening Hours:

Tuesday - Friday 09:00-16:00

Saturday 09:00 - 13:00

**01568 610760**



responsive fibres that support your pet for a comfortable snooze



**Unit 3, Barrington Business Centre, Glendower Road, Leominster, HR6 0RL**





# H.W.S. PEST CONTROL



**20 YEARS EXPERIENCE  
FULLY INSURED AND LICENSED**

- RATS
- WASPS
- BEES
- FLIES
- MOLES
- MICE
- HORNETS
- FLEAS
- CLOTHES MOTHS
- WOODWORM

**TELEPHONE: 01544 231509 / 07818 034301**

**EMAIL: ardy-hwspest@hotmail.co.uk**



**NPTA**

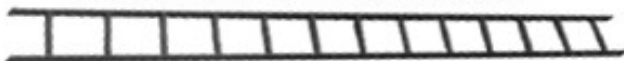
tomorrow's association  
for today's technician



**PROMPT  
Verified**



## **ANDYMEN** Est 1999



**WINDOW CLEANING - Traditional or Water-fed pole system**

**HOME & GARDEN MAINTENANCE**

**GUTTERS & FASCIAS**

**PAINTING**

**DECORATING**

**TILING**

**HEDGE CUTTING & MOWING**



**Call Andy: 07855 813303 or Mark: 07825 854990**

**andyment1999@gmail.com**

## The Day I went to Paris for Lunch

And came back the same day, of course. A bit extravagant, you might think, although there are worse places to go for lunch, and I didn't start from here. If I started from here I would struggle to get to London in time for lunch never mind Paris. I began my journey from where I used to live, in a village in Northamptonshire, so it was only 40 minutes by train from Kettering to London, across town to Waterloo (from where Eurostar left in those days) and off we went, me and my sister, to meet a couple of friends who lived there.

You may be wondering if there was more to it than just meeting two friends, and indeed there was. I went to eat some mashed potato. No, don't go away. This was no ordinary mash, it was made by a famous chef called Joël Robuchon, whose restaurant Jamin boasted three Michelin stars, so he could obviously cook other things as well.

Normally I wouldn't have bothered, but he had recently announced his retirement, and his mashed potato was world famous, universally renowned. If I didn't go soon, I would never experience the pinnacle of tuberous Haute Cuisine – 'the best mashed potato in the world' according to legend – and I would cry into my own lumpy spuds for evermore.

What made this *purée de pommes de terre* stand out was firstly the variety of spud – they had to be Ratte (expensive, naturally) – which then had to be steamed in their skins, peeled, passed through a potato ricer, sieved and puréed (nothing so coarse as Anglo-Saxon mashing, this was the height of refined French technique) and combined with a roughly equal quantity of butter, some warm milk and a sprinkle of salt, then sieved again, and again, until it achieved a creamy, buttery, silky, feather-light, ethereal texture and sublime 'essence of potato' taste. Not to mention butter.

Try it. I reckon even most men could mash potatoes: if you cooked the spuds for them and showed them where you keep the masher. But in a world where top chefs (and he was nominated in the 1980s as 'Chef of the Century') tend to make elaborate dishes from exotic ingredients that ordinary mortals can't even find, never mind afford, to make a dish of such simplicity from just four ingredients and elevate it to such a peak of perfection, is indeed the mark of a dedicated and accomplished chef.

And that was that. Except that he didn't retire. He did a Frank Sinatra and came back to open another restaurant, and then another. I lost count of how many in the end – there are dozens of 'Atelier Joël Robuchon' restaurants around the world now – but he must have had at least thirty Michelin stars by the time of his death in 2018.

I didn't think of myself as a sucker having fallen for the old 'going to retire' routine, but I didn't go back to Paris for more mash in any of the new places either, and since the Ateliers are now owned by a big company some of the individual magic will doubtless have gone. Last time I looked, the one in London had a set menu for £190 a pop! although, not surprisingly, it's closed since. I'll have to get the masher out.

## Odd jobs

Have you ever done any weird and wonderful jobs in your time? I have. Like many students growing up in the '60s and '70s, I took a number of jobs during school and university vacations. One Easter holiday I spent putting crosses on thousands of hot cross buns, while during a hot summer, I squeezed jam into an extraordinary number of doughnuts. Over Christmas, I delivered the post, was a milkman and, for a time, worked on a machine that broke down ladies' plastic high heels into pellets for recycling!

But the weirdest job *offer*, I ever had occurred some years later....

I was working in children's publishing by then, had recently gone freelance, and, as actors euphemistically put it, was 'resting' in between jobs. My eye was caught by an ad in the 'Sits Vac' column of the *Times*, which read 'Man wanted for heavy lifting job'. I was living in Brighton at the time, and the phone number was a local one. I was young and fit and assumed that the job involved moving a few boxes or furniture around for some elderly person. So I rang the number.

It was answered by an elderly lady (so far so good), and she lived just along the road from me. Perfect. What could possibly go wrong? We arranged to meet at her flat, so I smartened myself up, made my way there and rang her bell. She was a slightly odd-looking woman, thin, stooped and dressed all in black. But she made me a cup of tea and sat me down with a biscuit.

After a time, she took a framed photo from the sideboard and showed it to me.

"That's my daughter," she informed me.

"Very nice," was my response, not quite knowing where this was leading.

"She lives in Australia," she went on.

"Interesting," I replied

"She's married to a TURK!" she explained, spitting out the last word, as if her daughter was shackled up with the Devil himself. "I want her back, and I want someone to go and get her."

So this 'lifting job', which I thought meant moving around a few bits and pieces, actually involved being flown halfway across the world, kidnap, abduction and forced migration. I imagined myself trying to physically carry this poor young woman, kicking and screaming, onto a Qantas flight, with the Sydney police and half the Turkish community of the city in hot pursuit, plus likely arrest at Heathrow to follow.

A few things occurred to me: First, this old woman was obviously deranged. Secondly, her daughter had clearly moved herself as far from her mad mother as possible. But thirdly, a free trip to the land of sunshine might not be so bad. And I could always return empty handed and tell the old woman her daughter didn't want to come back, couldn't I? But did that mean I could be guilty of *conspiring* to commit a serious crime?

As I was leaving, I told the old woman I would think about it.....but I already had!

Have you had any strange jobs that you think might interest Newsletter readers? Perhaps you were a doctor to a duke or nanny to a narcotics smuggler. Do send them into the usual email address.

Paul Humphrey



## LETTER TO THE EDITOR



Dear Editor

It was with some misgivings that we set off for our traditional Boxing Day walk up to Croft Ambrey. Mist shrouded the countryside, but we were rewarded with brilliant sunshine once we broke through the cloud. The views were spectacular from the top and as we settled down for our picnic lunch, we were treated to a rare white rainbow. Also known as a fogbow, it is a similar phenomenon to a rainbow and occurs when sunlight shines through water droplets. However, because fog droplets are smaller than rain droplets, a lot of the colour is lost and it appears white.

Sasha Bowers

*Many thanks to Sasha for the photo of the fogbow on the opposite page - Ed*

## MORTIMER VETS

Mortimer Vets is an independently run and owned vets.

Here's a bit about us:

- Truly independent local veterinary practice
- Our friendly experienced team offer professional care for your dogs, cats, horses and small pets
- Modern treatment and diagnostic facilities with full in-patient care and out of hours hospitalisation if required
- Preventative health care plans available
- Small animal out of hours advice service using our own vets, supported by Vets Now for emergency treatment if required
- Full 24/7 equine emergency service covering Herefordshire, Shropshire and Worcestershire
- Easy access from A49 and A44, ample parking



FOLLOW US ON:



## CONTACT US AND FIND US:



Unit 7 Northern Lights Business Park,  
Leominster HR6 0SW  
info@mortimervets.co.uk | 01544 388262.



Opening hours: Mon-Fri - 8.30am-5.30pm  
Out of hours emergency service available.



Thanks to the following for the 2 lower rows of photos on this page:

Kate Griffiths: Church flowers at Christmas.

Carol Clare: Snowdrops near her house on January 1st.

Jane Goldman: Bell tower in the snow.

Val Ainsworth: 4Cs Christmas table decoration presentation in December.

Lesley Bradford: Café advent calendar window by Di Hill & Laney Lane.

**Croft with Yarpole and Lucton**  
**Parish Church Services for February and March 2025**



Date	Service	Church	Time
<b>FEBRUARY</b>			
Sunday 2 <sup>nd</sup> February	<b>Holy Communion – Book of Common Prayer</b>	Croft	9:30
Wednesday 5 <sup>th</sup> February	<b>Be Still</b>	Yarpole	17:30
Sunday 9 <sup>th</sup> February	<b>Holy Communion</b>	Yarpole	9:30
Monday 10 <sup>th</sup> February	<b>Café Church (study on Daniel)</b>	Yarpole	19:30
Sunday 16 <sup>th</sup> February	<b>Holy Communion – Book of Common Prayer</b>	Yarpole	8:30
	<b>Celtic Evening Prayer</b>	Yarpole	15:00
Sunday 23 <sup>rd</sup> February	<b>Non-liturgical service</b>	Yarpole	9:30
Monday 24 <sup>th</sup> February	<b>Café Church (study on Daniel)</b>	Yarpole	19:30
<b>MARCH</b>			
Sunday 2 <sup>nd</sup> March	<b>Holy Communion – Book of Common Prayer</b>	Croft	9:30
Wednesday 5 <sup>th</sup> March	<b>Be Still (Ash Wednesday)</b>	Yarpole	17:30
Sunday 9 <sup>th</sup> March	<b>Holy Communion</b>	Yarpole	9:30
Monday 10 <sup>th</sup> March	<b>Café Church (study on Daniel)</b>	Yarpole	19:30
Sunday 16 <sup>th</sup> March	<b>Holy Communion – Book of Common Prayer</b>	Yarpole	8:30
	<b>Celtic Evening Prayer</b>	Yarpole	15:00
Sunday 23 <sup>rd</sup> March	<b>Non-liturgical service</b>	Yarpole	9:30
Monday 24 <sup>th</sup> March	<b>Café Church</b>	Yarpole	19:30
<p>Anyone wishing to contact a priest please phone or email:            Rev. Matthew Burns on 01568 614399, <a href="mailto:teamvicarwest@leominsterteam.org.uk">teamvicarwest@leominsterteam.org.uk</a></p> <p>To book a funeral, interment, wedding or baptism and for other information please phone: Priory            Office 01568 612124            Monday to Friday 9.30 – 1.00</p> <p>Churchwardens: Oliver Elphick (515303) Jane Higgins (708390)</p>			



**Old St Peter's Church**  
Lucton



**St Leonard's Church**  
Yarpole



**St Michael  
& All Angels Church**